

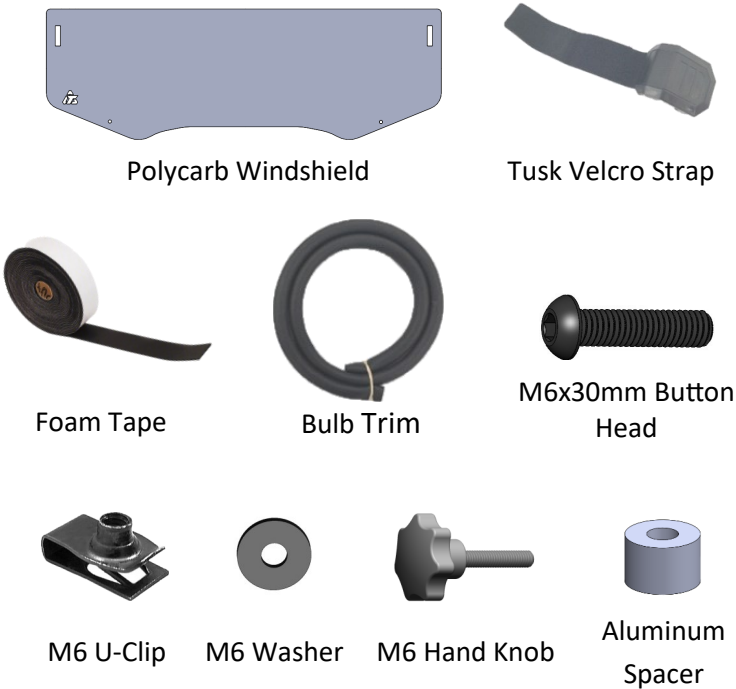
Tusk Removable Half Windshield: Can-Am Maverick R
Part Number: 1868600024



Thanks for your purchase of the Tusk Removable Half Windshield. This windshield is made to provide additional riding comfort while still allowing air flow to keep the cab clear of swirling dust. Please take note of the information and instructions below to get the most out of your Tusk Windshield.

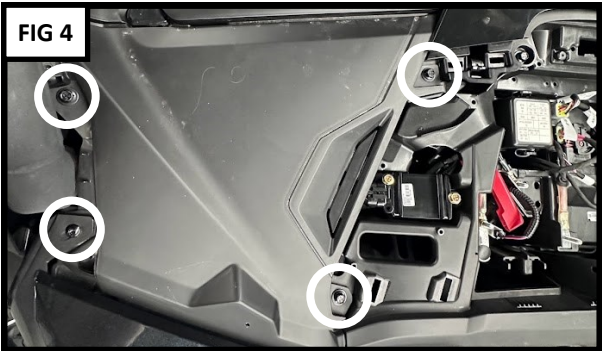
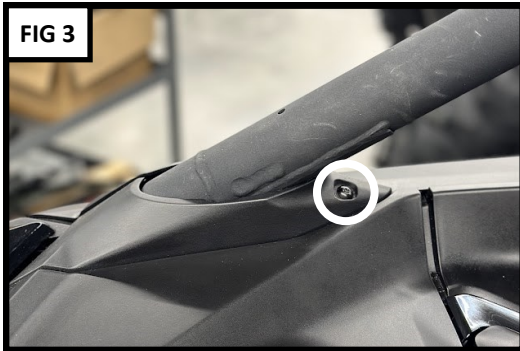
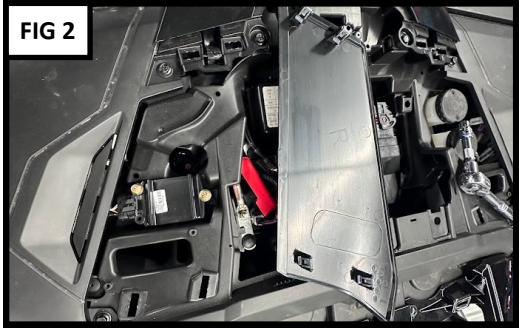
Assembly: *Before you throw any packaging away, make sure you received all of the necessary hardware*

Vehicle Fitment:	
Can-Am Maverick R	2024+
Hardware:	QTY:
Polycarb Windshield	1
Tusk Velcro Strap	2
Foam Tape	12"
Bulb Trim	70"
M6x30mm Button Head Bolt	2
M6 Washer	2
M6 Hand Knob	2
Aluminum Spacer	2
M6 U-Clip	2
Note: All trim may need to be trimmed to fit as needed.	



Installation Instructions:

1. Set the **POLYCARB WINDSHIELD** on a flat clean surface. Make sure your work surface is very clean and free from any dirt or contamination that may scratch the window. Place so that the folded edge is down. Remove the protective coating off of both sides of the polycarb. Stick the **70" BULB TRIM** onto the edges and bottom of the window. The bulb should face up. This will contact the hood when installed. Use heavy duty scissors or side cutters to trim to length if needed. **FIG 1**
2. Remove the center fuse cover. Remove the two painted side panels by pulling straight up from both ends. There are two clips on both ends of the panel. **FIG 2**
3. Remove the T25 bolt from the A Pillar trim. Slide the trim forwards to remove it. **FIG 3**
4. Remove the three 10mm bolts and one T40 from the side covers. You should now be able to carefully pull this panel off. **FIG 4**



Tusk Removable Half Windshield: Can-Am Maverick R

5. Slide an **M6 U-CLIP** through the slot with the nut side down. **FIG 5/6**
6. On the backside of the removed panel there are two dimples manufactured into the panel. Using a 1/4" drill bit, drill the dimple that covers the previously installed U-Clip. *(Note: U-Clips are both installed on the passenger side slot. Do not drill panels symmetrical from each other.)* **FIG 6**
7. With both U-Clips installed the body panels can be reinstalled in reverse to how they were removed.
8. Set the windshield onto the roll cage. Align the lower holes in the windshield with the previously installed M6 U-Clip.
9. For an easily removable installation, pass the **M6 Hand Knob** through an **M6 WASHER**, hole in the bottom of the windshield, an **ALUMINUM SPACER**, and finally bolt it to the previously installed U-Clip. Repeat for the other side.
Alternatively for a lower profile install, install the **M6x30MM BUTTON HEAD BOLT** instead of the hand knob.
10. Cut and stick the **FOAM TAPE** to both of the **TUSK VELCRO STRAPS** as shown in **FIG 7**.
11. Attach the **TUSK VELCRO STRAPS** to the windshield as shown in **FIG 8, 9**.

Enjoy the use on your new Tusk Removable Half Windshield!

